

*MX Component Version 3*

Operating Manual

(Startup)

**mitsubishi**



**MELSOFT**  
Integrated FA Software

**SW3D5C-ACT-E**



REVISIONS

\* The manual number is given on the bottom left of the back cover.

Print Date	* Manual Number	Revision
Apr., 2002	SH (NA) -080270-A	First edition
Jun., 2002	SH (NA) -080270-B	Correction Section 3.3
Nov., 2006	SH (NA) -080270-C	Correction Section 2.2
Oct., 2007	SH (NA) -080270-D	Correction Generic Terms and Abbreviations, Section 2.2, Section 3.1.2, Section 3.2, Section 3.3, Section 3.4 Addition Section 3.4.3 Deletion Chapter 4
Jun., 2008	SH (NA) -080270-E	Correction Generic Terms and Abbreviations, Section 2.2, Section 3.1.2, Section 3.2, Section 3.3, Section 3.4, Section 3.4.3
Dec., 2008	SH (NA) -080270-F	Correction Section 2.2

Japanese Manual Version SH-080273-F

This manual confers no industrial property rights or any rights of any other kind, nor does it confer any patent licenses. Mitsubishi Electric Corporation cannot be held responsible for any problems involving industrial property rights which may occur as a result of using the contents noted in this manual.

© 2002 MITSUBISHI ELECTRIC CORPORATION

## — SOFTWARE USER REGISTRATION —

After agreeing to the terms of the Software License Agreement included in the package, please access the MELFANSweb Home Page (<http://www.MitsubishiElectric.co.jp/melfansweb>) and make a software user registration. (User registration is free of charge.)

You can also make a registration by faxing or mailing the "Software Registration Card" packed with the product.

### 1. Software Registration

You can make a software registration by accessing the MELFANSweb Home Page or faxing or mailing the "Software Registration Card" packed with the product.

After you have made a software registration, we will register the user and send the "Software registration confirmation" together with the user ID.

We will also provide the latest information, such as the new product release, version upgrade information and event information, by direct mail.

### 2. Notes on Contact

Please ask questions concretely and clearly using terms listed in the manual.

When requesting us to solve a problem, provide us with detailed information for reproducing the problem.

In addition, contact the respective manufacturers when asking questions about the operating system (OS) or the other vender's software products

User registration is valid only in Japan.

## INTRODUCTION

Thank you for choosing the Mitsubishi MELSOFT series comprehensive Factory Automation software. Read this manual and make sure you understand the functions and performance of MELSOFT series thoroughly in advance to ensure correct use.

## CONTENTS

REVISIONS .....	A- 1
SOFTWARE USER REGISTRATION.....	A- 2
CONTENTS.....	A- 3
Manuals .....	A- 4
Generic Terms and Abbreviations .....	A- 5
Product Makeup .....	A- 6
<b>1 GENERAL DESCRIPTION</b>	<b>1- 1 to 1- 2</b>
<b>2 SYSTEM CONFIGURATION</b>	<b>2- 1 to 2- 3</b>
2.1 System Configuration.....	2- 1
2.2 Operating Environment.....	2- 2
<b>3 INSTALLATION AND UNINSTALLATION</b>	<b>3- 1 to 3-16</b>
3.1 Installation .....	3- 1
3.1.1 Installation procedure.....	3- 1
3.1.2 Installation.....	3- 2
3.2 Registered Icons .....	3- 8
3.3 Uninstallation.....	3- 9
3.4 Installing the USB Driver.....	3-11
3.4.1 When Windows® 2000 Professional is used.....	3-11
3.4.2 When Windows® XP is used.....	3-13
3.4.3 When Windows Vista® is used .....	3-15

## Manuals

The following lists the manuals for this software package.  
Refer to the following table when ordering manuals.

### **Related Manuals**

Manual Name	Manual Number (Model Code)
MX Component Version 3 Operating Manual Describes the setting and operation methods of each utility on MX Component. (Sold separately)	SH-080271 (13JU32)
MX Component Version 3 Programming Manual Describes the programming procedures, details and error codes for ACT control. (Sold separately)	SH-080272 (13JF66)

Note: The above manuals are contained on the CD-ROM with the corresponding software packages as sets.  
Any of the manuals is available separately in printed form. Please indicate its manual number (model code) in the above list, when ordering the printed manual.

### **NOTICES**

- We don't guarantee the commercially-available Windows-based software products that have been introduced in this manual.
- We hold the copyrights of this software package.
- No part of this manual may be transcribed or duplicated in any form without prior permission by Mitsubishi Electric Corporation.
- We have attempted to cover all the revisions of software and hardware, but this manual may not contain the latest revisions.
- We assume that one software package will be used on one personal computer.
- We permit the user to use this software package (including this manual) based on the Software License Agreement.
- We are not liable for consequences or influences due to this software package (including this manual).
- The specifications of this software package and the descriptions in this manual may be altered in future without prior notice.

## Generic Terms and Abbreviations

Unless otherwise stated, this manual uses the following abbreviations and terms for the explanation of MX Component.

Generic Term/Abbreviation	Description
MX Component	Generic product name for product types SWnD5C-ACT-E and SWnD5C-ACT-EA. (n denotes version 0, 2 or 3) -EA denotes a volume license product.
Windows Vista®	Generic term of Microsoft® Windows Vista® Home Basic Operating System, Microsoft® Windows Vista® Home Premium Operating System, Microsoft® Windows Vista® Business Operating System, Microsoft® Windows Vista® Ultimate Operating System and Microsoft® Windows Vista® Enterprise Operating System.
Windows® XP	Generic term of Microsoft® Windows® XP Professional Operating System and Microsoft® Windows® XP Home Edition Operating System.
PC CPU module	Abbreviation of the MELSEC-Q series corresponding PC CPU module (CONTEC CO., LTD. make).
Personal computer	Generic term of PC CPU module and IBM-PC/AT compatible Personal computer.
1-license product	Abbreviation of MX Component 1-license product.
Volume license product	Abbreviation of MX Component volume license product.

Product Makeup

The MX Component consists of the following products.

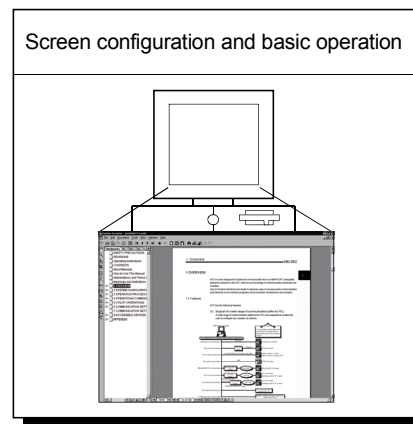
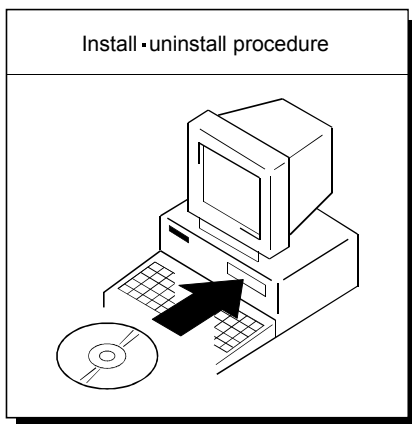
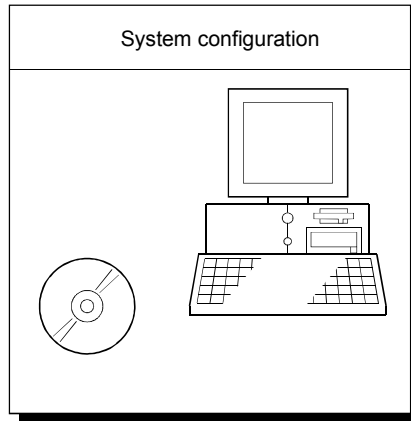
Type	Product Name	Quantity
SW3D5C-ACT-E	MX Component Version 3(1-license product) (CD-ROM)	1
	End-user software license agreement	1
	Software registration card	1
	License agreement	1
SW3D5C-ACT-EA	MX Component Version 3(Volume license product) (CD-ROM)	1
	End-user software license agreement	1
	Software registration card	n *1
	License agreement	1

\*1: The number of software registration cards, which are included with the product, is equivalent to that of licenses.



# 1 GENERAL DESCRIPTION

This manual explains the system configuration, installation and uninstallation procedures and manual browsing method of MX Component which operates on Windows® .

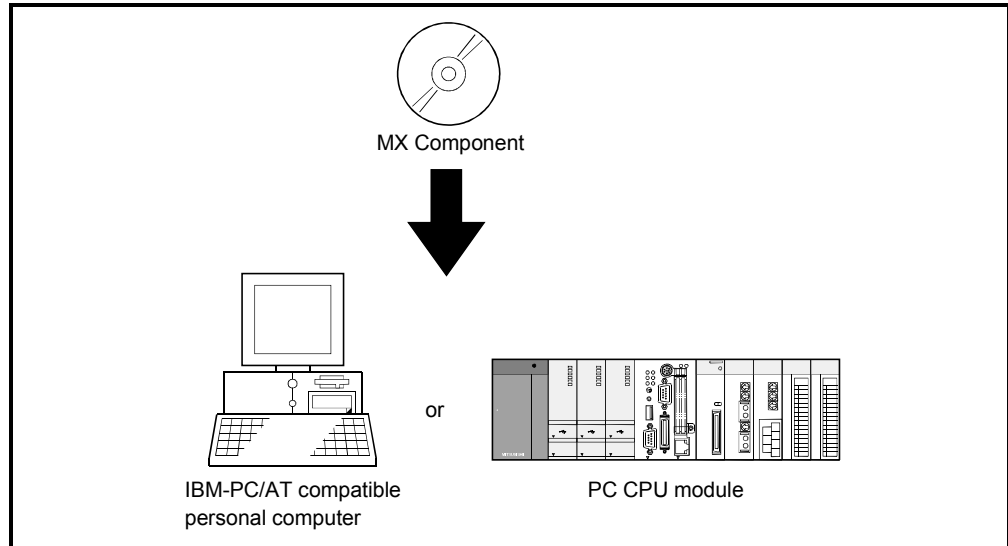




## 2 SYSTEM CONFIGURATION

### 2.1 System Configuration

The following figure shows the system configuration.



#### POINT

It is illegal to use this product on two or more personal computers.  
You must not use this product on any other personal computer than one specified in the software registration card.

2.2 Operating Environment

The following table summarizes the operating environment for MX Component.

Item		Description										
Computer	IBM PC/AT compatible personal computer	133MHz or more Pentium® *1 IBM PC/AT compatible personal computer where the OS operates.										
	PC CPU module	MELSEC-Q series compatible PC CPU module (CONTEC CO., LTD. make)										
Required memory		32MB or more *2										
Hard disk free space		100MB or more *3										
Disk drive		CD-ROM disk drive										
Display		Resolution 800 × 600 pixels or higher (1024 × 768 pixels or higher for Windows Vista® .)										
System Software		Microsoft® Windows® 2000 Professional Operating System (English version), Microsoft® Windows® Millennium Edition Operating System (English version), Microsoft® Windows® 95 Operating System (English version), Microsoft® Windows® 98 Operating System (English version), Microsoft® Windows NT® Workstation Operating System Version 4.0 (English version) *4, Microsoft® Windows® XP Professional Operating System (English version) *5, Microsoft® Windows® XP Home Edition (English version) *5, Microsoft® Windows Vista® Home Basic Operating System (English version) , Microsoft® Windows Vista® Home Premium Operating System (English version) , Microsoft® Windows Vista® Business Operating System (English version) , Microsoft® Windows Vista® Ultimate Operating System (English version) or Microsoft® Windows Vista® Enterprise Operating System (English version)										
Programming language *6		<table border="1"> <thead> <tr> <th>Programming language</th> <th>Development software</th> </tr> </thead> <tbody> <tr> <td>Visual Basic®</td> <td>Microsoft® Visual Basic® 6.0 (English version), Microsoft® Visual Basic® .NET 2003 (English version) or Microsoft® Visual Studio 2005 Visual Basic® (English version) *9 Microsoft® Visual Studio 2008 Visual Basic® (English version) *10</td> </tr> <tr> <td>Visual C++®</td> <td>Microsoft® Visual C++® 6.0 (English version), Microsoft® Visual C++® .NET 2003 (English version) or Microsoft® Visual Studio 2005 Visual C++® (English version) *9 Microsoft® Visual Studio 2008 Visual C++® (English version) *10</td> </tr> <tr> <td>VBScript *7, *8</td> <td>Text editor and commercially available HTML tool</td> </tr> <tr> <td>VBA</td> <td>Microsoft® Excel 2000 (English version), Microsoft® Excel 2002 (English version), Microsoft® Excel 2003 (English version) or Microsoft® Excel 2007 (English version) *11 Microsoft® Access 2000 (English version), Microsoft® Access 2002 (English version), Microsoft® Access 2003 (English version) or Microsoft® Access 2007 (English version) *11</td> </tr> </tbody> </table>	Programming language	Development software	Visual Basic®	Microsoft® Visual Basic® 6.0 (English version), Microsoft® Visual Basic® .NET 2003 (English version) or Microsoft® Visual Studio 2005 Visual Basic® (English version) *9 Microsoft® Visual Studio 2008 Visual Basic® (English version) *10	Visual C++®	Microsoft® Visual C++® 6.0 (English version), Microsoft® Visual C++® .NET 2003 (English version) or Microsoft® Visual Studio 2005 Visual C++® (English version) *9 Microsoft® Visual Studio 2008 Visual C++® (English version) *10	VBScript *7, *8	Text editor and commercially available HTML tool	VBA	Microsoft® Excel 2000 (English version), Microsoft® Excel 2002 (English version), Microsoft® Excel 2003 (English version) or Microsoft® Excel 2007 (English version) *11 Microsoft® Access 2000 (English version), Microsoft® Access 2002 (English version), Microsoft® Access 2003 (English version) or Microsoft® Access 2007 (English version) *11
Programming language	Development software											
Visual Basic®	Microsoft® Visual Basic® 6.0 (English version), Microsoft® Visual Basic® .NET 2003 (English version) or Microsoft® Visual Studio 2005 Visual Basic® (English version) *9 Microsoft® Visual Studio 2008 Visual Basic® (English version) *10											
Visual C++®	Microsoft® Visual C++® 6.0 (English version), Microsoft® Visual C++® .NET 2003 (English version) or Microsoft® Visual Studio 2005 Visual C++® (English version) *9 Microsoft® Visual Studio 2008 Visual C++® (English version) *10											
VBScript *7, *8	Text editor and commercially available HTML tool											
VBA	Microsoft® Excel 2000 (English version), Microsoft® Excel 2002 (English version), Microsoft® Excel 2003 (English version) or Microsoft® Excel 2007 (English version) *11 Microsoft® Access 2000 (English version), Microsoft® Access 2002 (English version), Microsoft® Access 2003 (English version) or Microsoft® Access 2007 (English version) *11											

- \*1: 150MHz or more Pentium® is recommended for use of Windows® Me, 300MHz or more Pentium® for use of Windows® XP, and 1GHz or more is recommended for use of Windows Vista® .
- \*2: 64MB or more is recommended for use Windows® 2000 Professional, 128MB or more for use of Windows® XP, and 1GB or more for use of Windows Vista® .
- \*3: 40GB or more having 15GB free space at minimum is recommended for Windows Vista® .
- \*4: Service Pack 3 or more is needed for use of Windows NT® Workstation 4.0.
- \*5: MX Component cannot be used in the XP compatibility mode.
- \*6: User programs created in the English environment is compatible the English environment only. They cannot be used in the Japanese environment.
- \*7: To operate VBScript, use Internet Explorer (version 5.00.2919.6307 or later).
- \*8: The ASP function is unusable for Windows® Me and Windows® XP Home Edition.
- \*9: Windows® 2000 Service Pack 4 or later, or Windows® XP Service Pack 2 or later is required for Visual Studio 2005. When using Visual Studio 2005 on Windows Vista®, Visual Studio 2005 Service Pack 1 or Visual Studio 2005 Service Pack 1 Update for Windows Vista® is required.
- \*10: Windows® XP Service Pack 2 or later, or Windows Vista® is required for Visual Studio 2008.
- \*11: Windows® XP Service Pack 2 or later is required for Excel 2007 or Access 2007.

POINT
(1) Instruction for use of the online manual Use with addition of personal computer memory ensures comfortable operation.
(2) Instruction for use of the PDF data Use with addition of personal computer memory ensures comfortable operation.
(3) When Microsoft® Windows® XP or Windows Vista® is used, the following new functions cannot be used. If any of the following new functions is used, this product may not operate normally. Start of application in Windows® compatible mode Fast user switching Remote desktop Big fonts (Details setting of Screen properties) Additionally, 64-bit OS is not available.

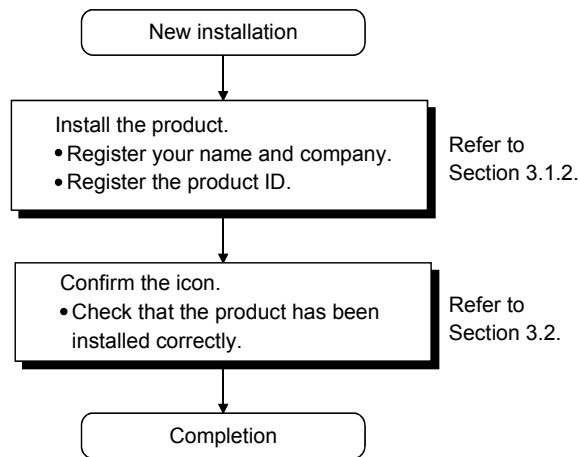
## 3 INSTALLATION AND UNINSTALLATION

This chapter provides how to install and uninstall MX Component.

### 3.1 Installation

#### 3.1.1 Installing procedure

Install MX Component in the following procedure.



3.1.2 Installation

The following is how to install MX Component.

POINT
(1) Terminate all the other applications running under Windows® before installation.
(2) The installer may not work normally because the update program of operating system or other companies' software such as Windows Update and java update may start automatically. Please install the driver after changing the setting of the update program not to start automatically.
(3) When the OS is Windows Vista®, Windows® XP, Windows® 2000 Professional or Windows NT® Workstation 4.0, long on as the user who has the Administrator attributes.

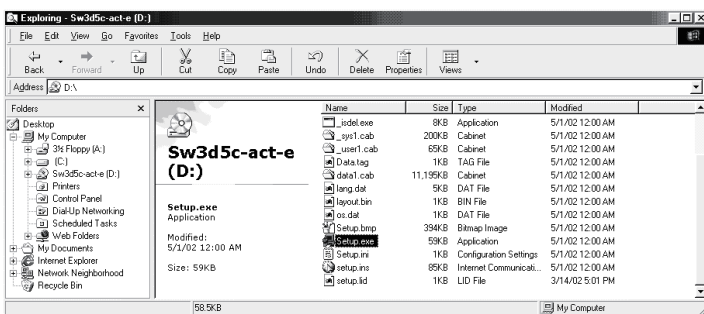


(1) Installing the product

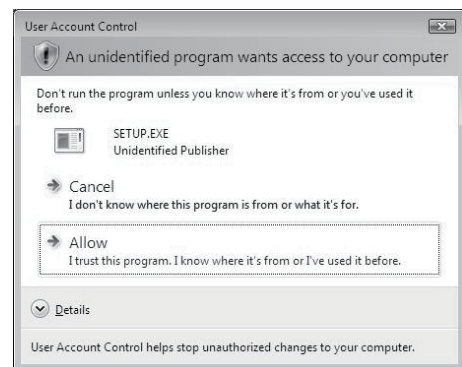
1) Start Windows® after powering on the personal computer.

2) Start Explorer and click the drive in which the disk has been inserted. Double-click "setup.exe". To display Explorer, right-click "Start" and choose "Explore".

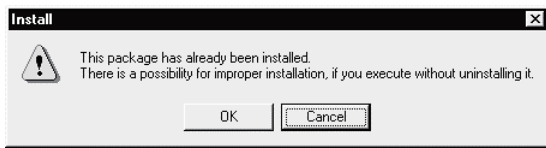
\* When user account control is enabled in Windows Vista®, the following screen appears. Click "Allow".



(To the next page)



(From the previous page)



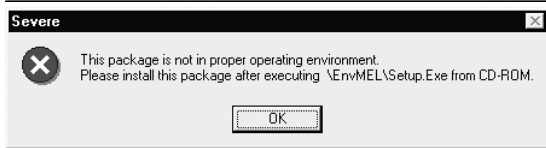
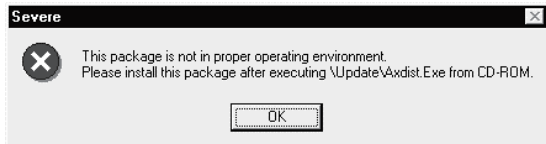
- 3) If the message on the left appears, click the **Cancel**, uninstall MX Component, and then reinstall it.

**REMARK**

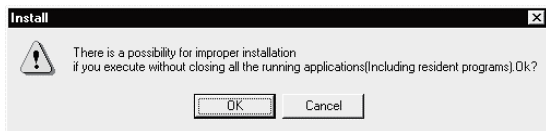
If SW0D5C-ACT-E has been installed in the personal computer where MX Component Version 3 will be installed, installing MX Component Version 3 without uninstalling SW0D5C-ACT-E will delete the licenses of SW0D5C-ACT-E.



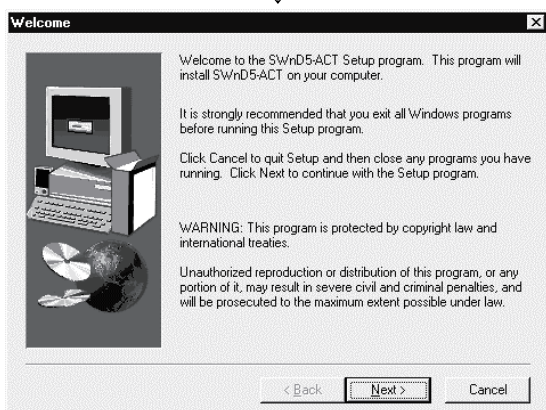
If the left screen appears, perform operation in accordance with the instructions given (a) in "(2) When message appears at start of installation". After the operation is over, restart installation operation.



If the left screen appears, perform operation in accordance with the instructions given (b) in "(2) When message appears at start of installation". After the operation is over, restart installation operation.



- 4) As the left screen appears, make sure that all applications have been closed and click the **OK**. If the applications are running, close all running applications.



- 5) As the left screen appears, read the information and click the **Next>**.

(To the next page)



(From the previous page)

- 6) Enter the name and company name, and then click the **Next>**.

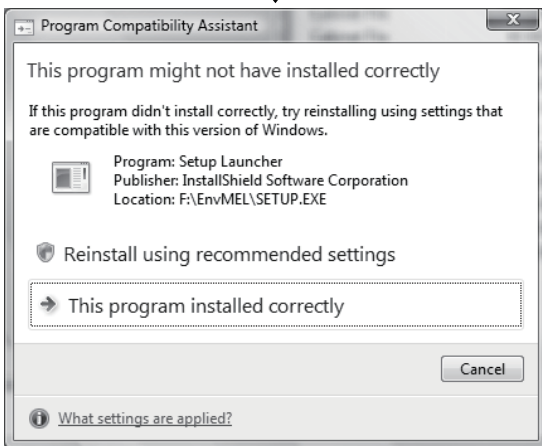
- 7) Confirm the registered name and company name. If they are correct, click the **Yes**. To make a change, click the **No** to return to the previous screen.

- 8) Enter the product ID and click the **Next>**. The product ID is printed on the Software User Registration card.

- 9) Specify the installation Destination Folder. If the installation Destination Folder displayed is correct, click **Next>**. If you change the destination folder, click **Browse...** and specify a new drive and folder.

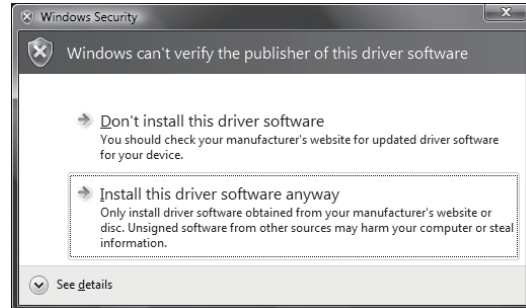
(To the next page)

(From the previous page)

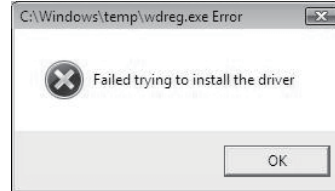
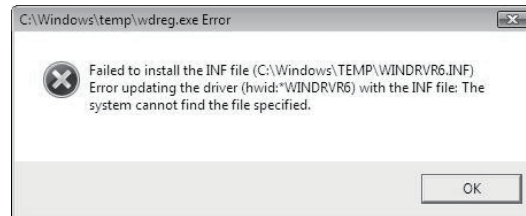


(To the next page)

\* The following screen appears in Windows Vista®. Click "Install this driver software anyway". This screen may appear in several times.



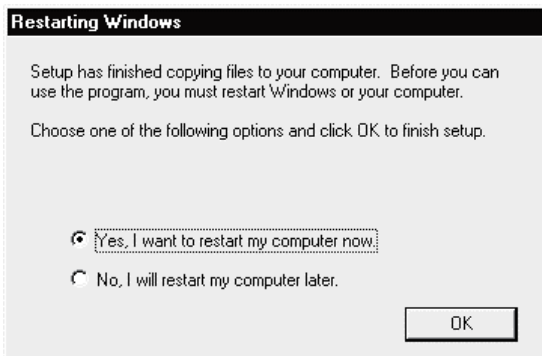
The either of the following screens may appear behind the Windows Security screen. Then, press the **Alt** + **Tab** keys to bring it to the front. Click **OK** on the following screens.



10) This completes installation. Click **OK**.

11) When the left screen appears on Windows Vista®, regardless of the installation result, choose "This program installed correctly". Do not choose "Reinstall using recommended settings", because the installer installs an incorrect module. If choose, reinstall MX Component with following POINT on the next page.

(From the previous page)



12) Windows® must be rebooted if the screen shown on the left appears.

(Completion)

**REMARK**

When Windows® XP Professional or Windows Vista® is used, the icons are registered to [Start] - [All Programs] - [MELSOFT Application].

**POINT**

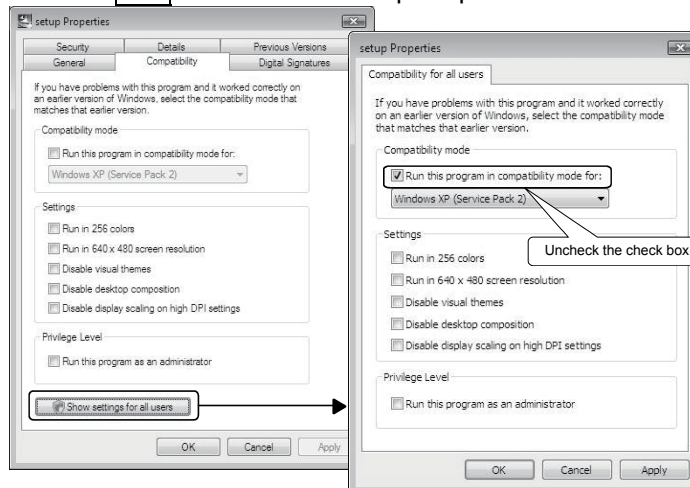
Note the following instructions when the installer is started from the hard disk drive of the personal computer for which Windows Vista® has been installed.

If the "Program Compatibility Assistant" screen appears after the installation, choose "This program installed correctly".

If "Reinstall using recommended settings" is selected by mistake, 'Windows XP SP2 compatibility mode' is set automatically.

Disable the 'Windows XP SP2 compatibility mode' by following the procedure described below, and perform the reinstallation.

1. Right-click on the setup.exe icon of the installation target in the Windows explorer, and open the "setup Properties" screen.
2. Select the "Compatibility" tab and click the "Show settings for all users" button.
3. Uncheck the "Run this program in compatibility mode for:" check box of compatibility mode in the "Compatibility for all users" tab and click the **OK** button.
4. Click the **OK** button on the "setup Properties" screen.



(2) When message appears at start of installation

When the installation of this product starts, the "This package is not in proper operating environment" message appears, disabling normal completion of installation.

In such a case, close all applications and perform the (a) or (b) operation.

(a) Installation of dcom95.exe or Axdist.exe

Execute dcom95.exe or Axdist.exe provided for MX Component.

Install MX Component after executing the exe file and restarting the personal computer.

Execute the exe file on the corresponding operating system as follows.

OS	File name
Microsoft® Windows® 95 Operating System	dcom95.exe
Microsoft® Windows® 98 Operating System	Axdist.exe
Microsoft® Windows NT® Workstation Operating System Version 4.0	Axdist.exe

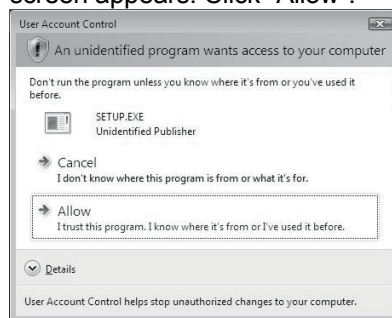
(dcom95.exe and Axdist.exe are in the "Update" folder on CD-ROM.)

(b) Installation of EnvMEL

Execute "/EnvMEL/Setup.exe" within the product (CD-ROM).

Then, install the product.

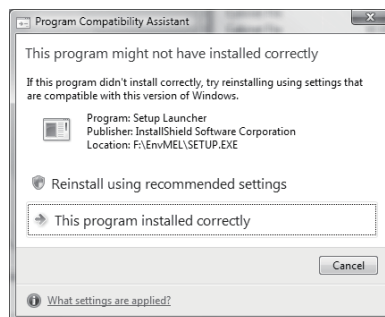
When user account control is enabled in Windows Vista®, the following screen appears. Click "Allow".



\*: After executing the above exe file, reinstall the product. If this product is not installed properly at this time, reboot the personal computer.

When the following screen appears on Windows Vista®, regardless of the installation result, choose "This program installed correctly".

Do not choose "Reinstall using recommended settings", because the installer installs an incorrect module.





### 3.2 Registered Icons

Installation of MX Component registers the following icons to [Start]-[Programs]-[MELSOFT Application]-[MX Component].

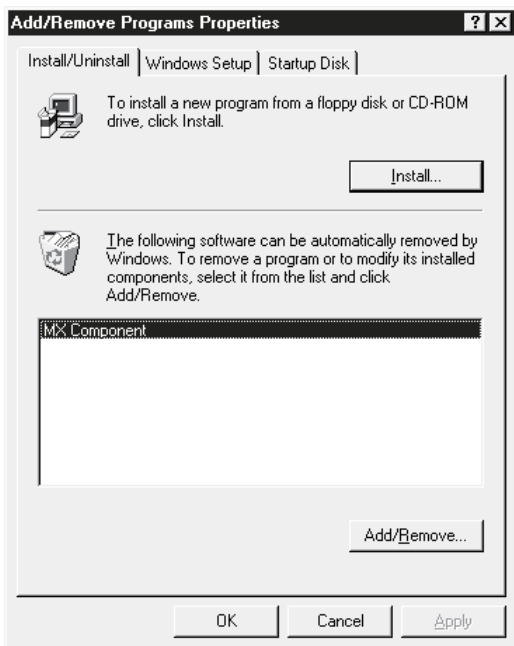
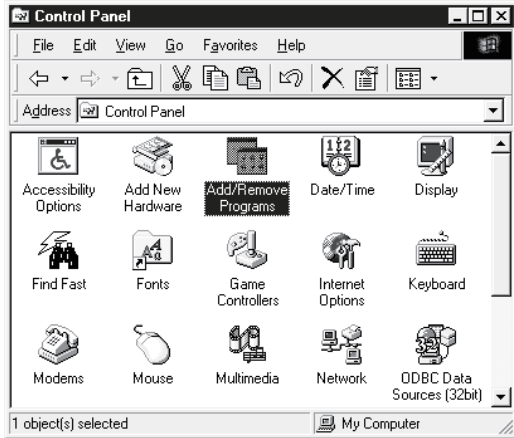
**REMARK**

When Windows Vista® or Windows® XP is used, the icons are registered to [Start] - [All Programs] - [MELSOFT Application].

Icon	Name	Description
	PLC Monitor Utility	Starts the PLC monitor utility.
	Communication setup utility	Starts the communication setup utility.

### 3.3 Uninstallation

The following is how to uninstall MX Component.



(To the next page)

- 1) Choose and double-click "Add/Remove Programs" in the Control Panel.

On Control Panel, choose [Start]-[Settings]-[Control Panel]

**REMARK**

When using Windows® XP, choose "Add/Remove Programs" from the Control Panel.

To display the Control Panel, choose [Start] - [Control Panel].

Chose "Uninstall a program" on the Control Panel in Windows Vista® .

To display the Control Panel, choose [Start] - [Control Panel].

- 2) Choose "MX Component".  
And then click **Add/Remove ...**.

**REMARK**

The screen shown on the left is the one for Windows® 98.

The screen displayed varies with the OS.

When using Windows® 2000 Professional, Windows® XP or Windows Vista® , perform the following operation.

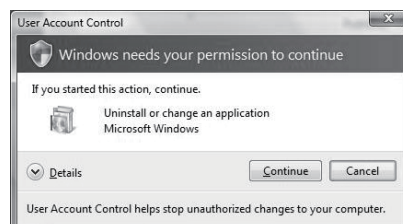
< Windows® 2000 Professional or Windows® XP>

- (a) Click "Change or Remove programs".
- (b) Choose "MX Component".
- (c) Click **Change/Remove**.

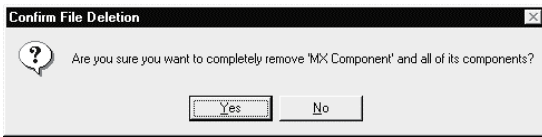
< Windows Vista® >

Choose "MX Component" on the "Uninstall or change a program" screen, and click "Uninstall/Change".

- \* When user account control is enabled in Windows Vista®, the following screen appears. Click the **Continue** button.

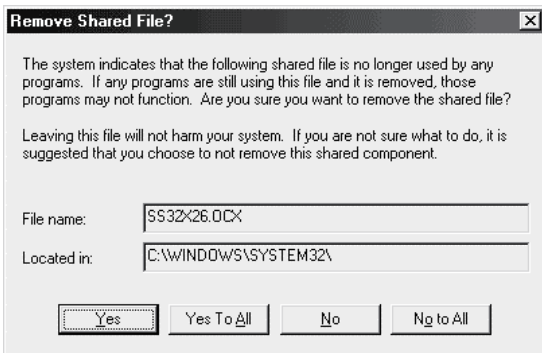


(From the previous page)

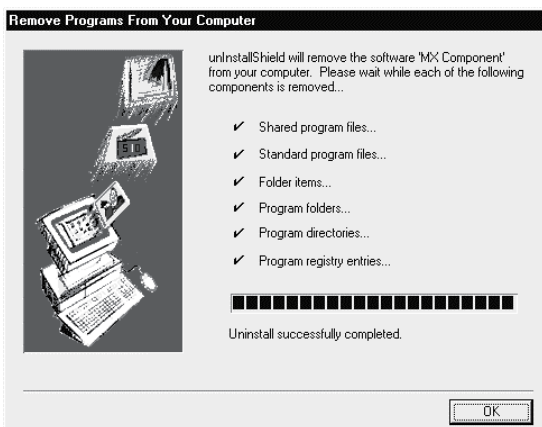


- 3) Check whether you will remove the software package or not.  
When uninstalling it, click **Yes**.  
Uninstallation starts.  
When not uninstalling it, click **No**.  
This returns to the preceding screen.

\* Components indicate the icons and files installed.



- 4) If the left screen has appeared, click the **No To All**.  
The software package of only MX Component is removed.  
If you click the **Yes** or **Yes To All**, the shared file of the Windows® compatible MELSOFT software will be removed and the other software packages may not operate properly.



- 5) When the removal finished message appears, click **OK**.  
Be sure to restart the personal computer, if the unremoved file alarm is given.

(Completion)

**POINT**

Uninstalling deletes all the settings within "Communication Setup Utility".  
To avoid this, export the file storing the settings.

### 3.4 Installing the USB Driver

When Windows® 2000 Professional, Windows® XP or Windows Vista® is used, the USB driver must be installed to make CPU USB communication.

The following is the USB driver installation procedure.

POINT
<p>If the USB driver cannot be installed, check the following setting.</p> <p>(1) When Windows® 2000 Professional is used</p> <p>If you have selected "Block-Prevent installation of unsigned files" after [Control Panel] - [System] - [Hardware] - [Driver Signing], the USB driver may not be installed.</p> <p>Choose "Ignore-Install all files, regardless of file signature" or "Warn-Display a message before installing an unsigned file" for [Driver Signing], and install the USB driver.</p> <p>(2) When Windows® XP is used</p> <p>If you have selected "Block-Never install unsigned driver software" after [Control Panel] - [System] - [Hardware] - [Driver Signing], the USB driver may not be installed.</p> <p>Choose "Ignore-Install the software anyway and don't ask for my approval" or "Warn-Prompt me each time to choose an action" for [Driver Signing], and install the USB driver.</p>

#### 3.4.1 When Windows® 2000 Professional is used

The following indicates the procedure for installing the USB driver when using Windows® 2000 Professional.



↓  
(To the next page)

- 1) The screen shown on the left appears when you connect the personal computer and QCPU (Q mode) by the USB cable.  
Click the **Next >**.



(From the previous page)



2) Choose " Search for a suitable driver for my device (recommended)" and click the **Next>**.



3) Check "Specify a location" and click the **Next>**.



4) As the screen on the left appears, set the MX Component installation destination "Easysocket\USBdrivers" and click the **Next>**.  
The screen shown on the left shows the example of setting C:\MELSEC\Easysocket\USBdrivers. If volume MELSOFT products have been installed, browse the installation destination of the first product.



5) The screen on the left appears to indicate completion of installation. Click the **Finish** to terminate installation.

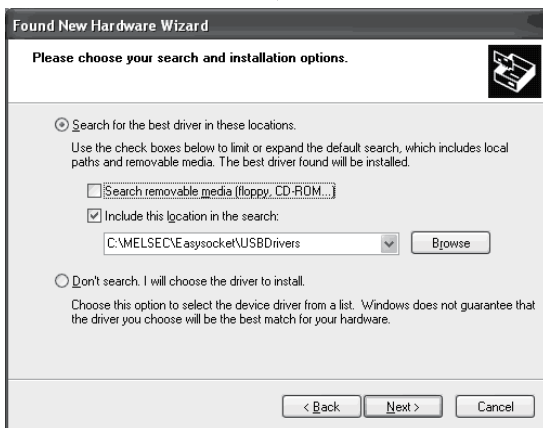
(Completion)

## 3.4.2 When Windows® XP is used

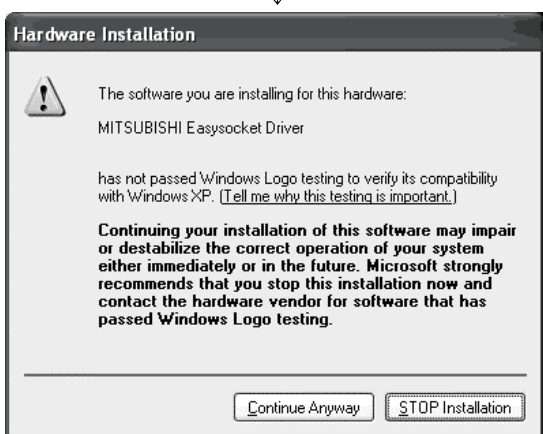
The following indicates the procedure for installing the USB driver when using Windows® XP.



- 1) The screen shown on the left appears when you connect the personal computer and QCPU (Q mode) by the USB cable. Choose "Install from a list or specific location [Advanced]" and click the **Next>**.



- 2) As the screen on the left appears, choose "Include this location in the search". Check "Include this location in the search" and set "Easysocket\USBDrivers" of the folder where MX Component was installed. After setting, click the **Next>**. The screen shown on the left shows the example of setting C: \MELSEC\Easysocket\USBDrivers. If volume MELSOFT products have been installed, browse the installation destination of the first product.



- 3) As the screen on the left appears, click the **Continue Anyway**.

**REMARK**

Though the screen on the left appears during installation of the USB driver, we have confirmed that the USB driver operates properly using Windows® XP. (No problem will occur after installation of the USB driver.)

Click **Continue Anyway** to continue the installation of the USB driver.

(To the next page)

(From the previous page)

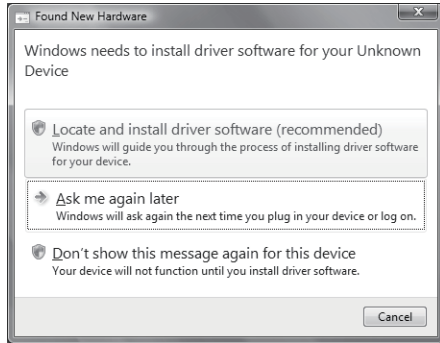


(Completion)

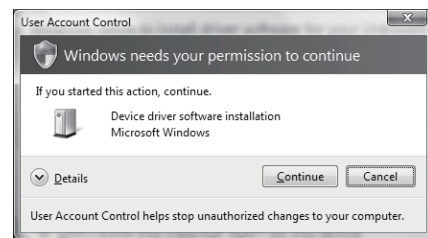
- 4) The screen on the left appears to indicate completion of installation. Click the **Finish** to terminate installation.

3.4.3 When Windows Vista® is used

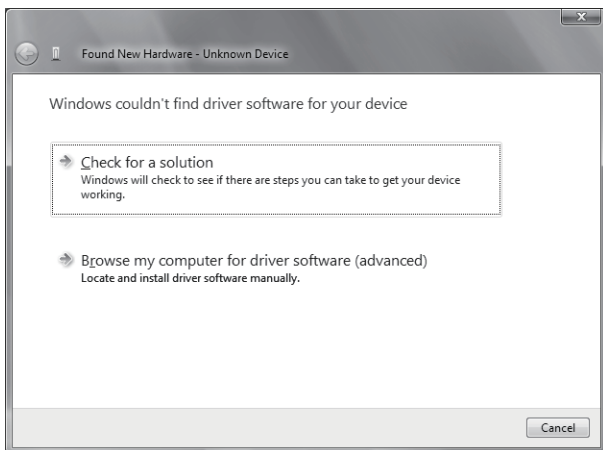
The following shows installation procedure of USB driver when using Windows Vista® .



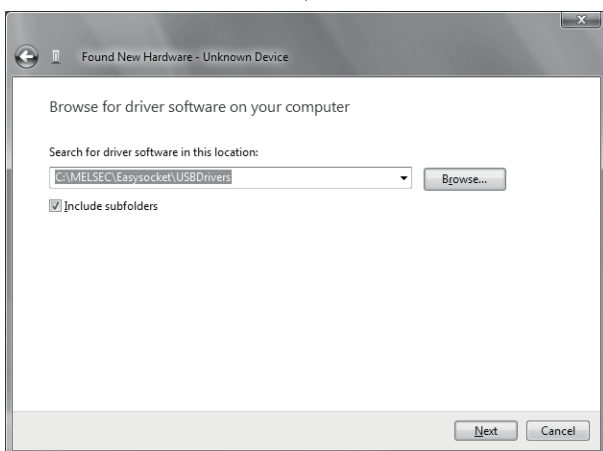
- 1) The left screen appears when personal computer is connected to the QCPU (Q mode) with USB cable. Choose "Locate and install driver software (recommended)" and wait until searching ends.
  - \* When user account control is enabled, the following screen appears. Click the **Continue** button.



- 2) The left screen appears. Choose "Browse my computer for driver software (advanced)".

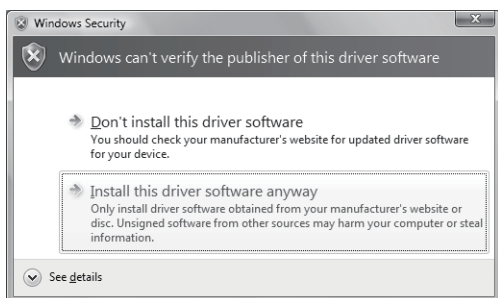


- 3) The left screen appears. Set installation location of MX Component, "Easysocket\USBdrivers". Then, click the **Next>** button. The left screen shows an example when C:\MELSEC\Easysocket\USBdrivers is set. If multiple MELSOFT products have been installed, refer to the installation location of the first installed product.

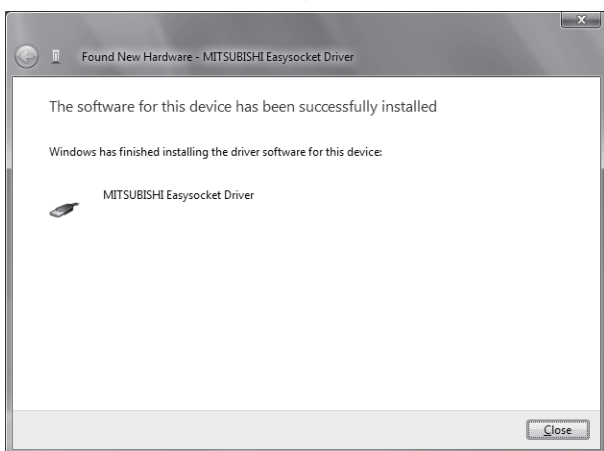


(To the next page)

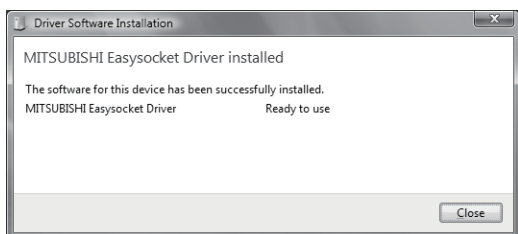
(From the previous page)



4) The left screen appears. Select "Install this driver software anyway".



5) The left screen appears. Click the **Close** button.



6) The left screen appears when the installation ends. Click the **Close** button to exit.



(Completion)

Microsoft, Windows, Windows NT, Windows Vista, Visual Basic and Visual C++ are registered trademarks of Microsoft Corporation in the United States and other countries.

Pentium is a registered trademark of Intel Corporation in the United States and other countries.

Other company and product names herein are either trademarks of registered trademarks of their respective owners.

SPREAD

Copyright(C) 1998 Far Point Technologies, Inc.



# *MX Component Version 3*

## Operating Manual (Startup)

MODEL	MELS3-ACTE-O-ST-E
MODEL CODE	13JU31
SH(NA)-080270-F(0812)MEE	



HEAD OFFICE : TOKYO BUILDING, 2-7-3 MARUNOUCHI, CHIYODA-KU, TOKYO 100-8310, JAPAN  
NAGOYA WORKS : 1-14 , YADA-MINAMI 5-CHOME , HIGASHI-KU, NAGOYA , JAPAN

When exported from Japan, this manual does not require application to the Ministry of Economy, Trade and Industry for service transaction permission.

Specifications subject to change without notice.