

# Installation method of the MELSOFT MX MESInterface

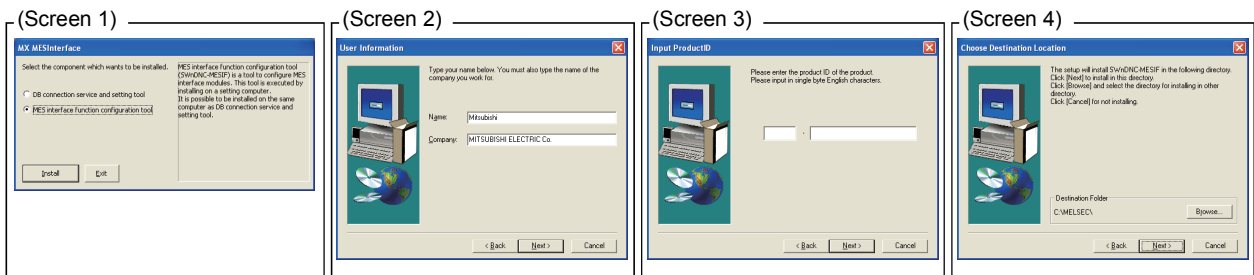
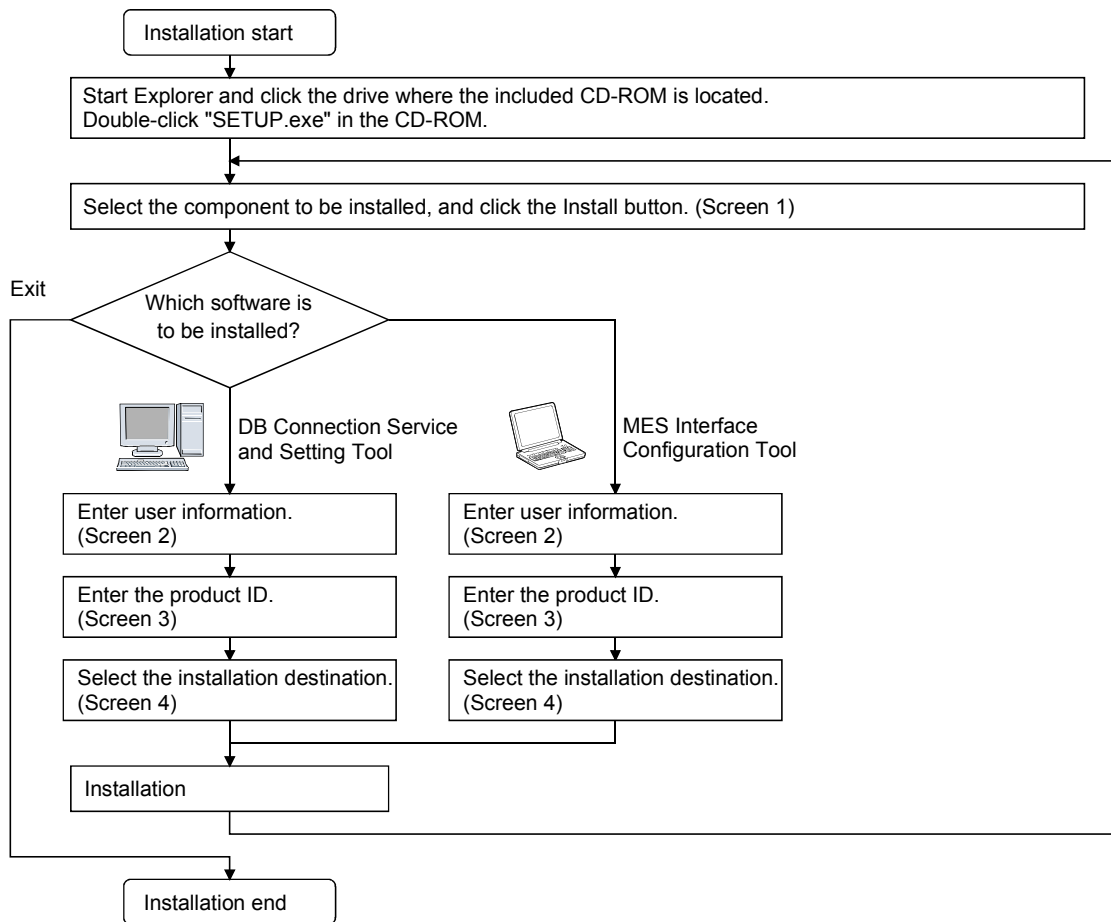
Thank you for choosing the Mitsubishi integrated FA Software MELSOFT MX MESInterface. In order to use this product, install the component to the personal computer according to the following procedure.

## [Procedures for Installing and Uninstalling]

- Before starting installation, terminate all of other applications running on Windows<sup>®</sup>.
- When installing or uninstalling MX MESInterface, log on as a user with Administrator authority.
- For the operating environment and installation/uninstallation, also refer to the manual provided on the included CD-ROM.
- When installing MELSOFT to a Windows Vista<sup>®</sup>-based personal computer, read the technical bulletin FA-A-0008.

\*For compatibility with Windows Vista<sup>®</sup>, refer to the manual on the included CD-ROM.

### (1) Installation procedure



\*If the confirmation screen appears during the installation, follow the screen instructions.

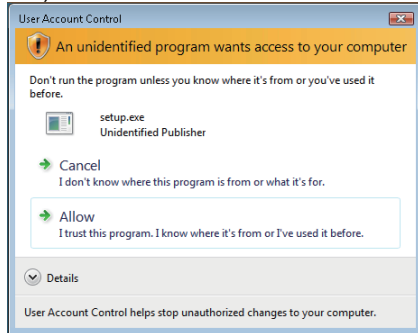
\*Up to 100 characters including "MESIF" can be used for the installation destination.

This means that up to 94 characters can be used when specifying a destination folder as a directory.

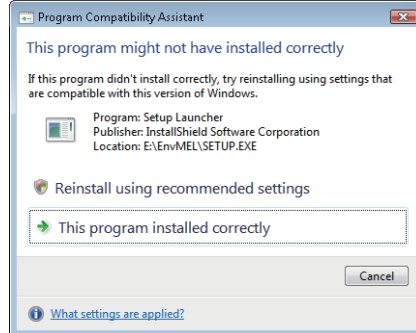
(Continued on the back page)

- \*If Screen 5 appears, select "Allow". (When using Windows Vista® )
- \*After completion of the "Environment of MELSOFT" installation, Screen 6 may be displayed. (When using Windows Vista® ) Click on "This program installed correctly", and close the screen.
- Do not select "Reinstall using recommended settings" because selecting it will install improper modules.
- \*If Screen 7 appears, restart the computer following the screen instructions.

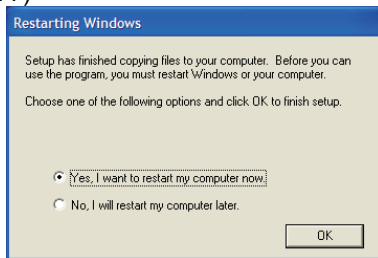
(Screen 5)



(Screen 6)



(Screen 7)

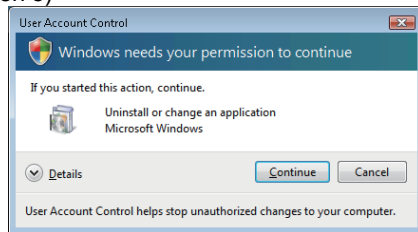


## (2) Uninstallation procedure

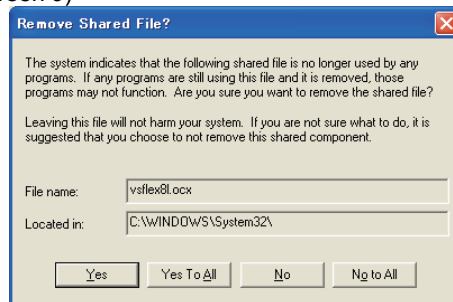
Start uninstallation from the control panel of Windows® .

- \*If Screen 8 appears, select "Continue". (When using Windows Vista® )
  - \*If Screen 9 appears, select "No to All".
  - \*If Screen 10 is displayed, restart the computer.
- To reinstall the product after uninstallation, be sure to restart the computer. Failure to do so may cause improper operation.

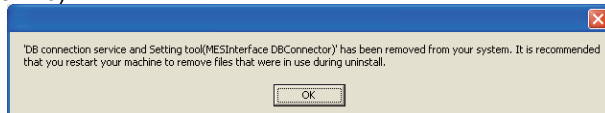
(Screen 8)



(Screen 9)



(Screen 10)



## [About the manual]

- (1) The manual for this product is stored in the "Manual" folder on the included CD-ROM.
- (2) To view the manual (PDF data) on the CD-ROM, Adobe Reader is required. Adobe Reader can be downloaded from the Adobe Systems website.
- (3) Refer to "readme.txt" in the "Manual" folder for the type of the manual stored on the CD-ROM.

Microsoft, Windows, and Windows Vista are registered trademarks of Microsoft Corporation in the United States and other countries.  
 Adobe and Reader are registered trademarks of Adobe Systems Incorporated in the United States and other countries.